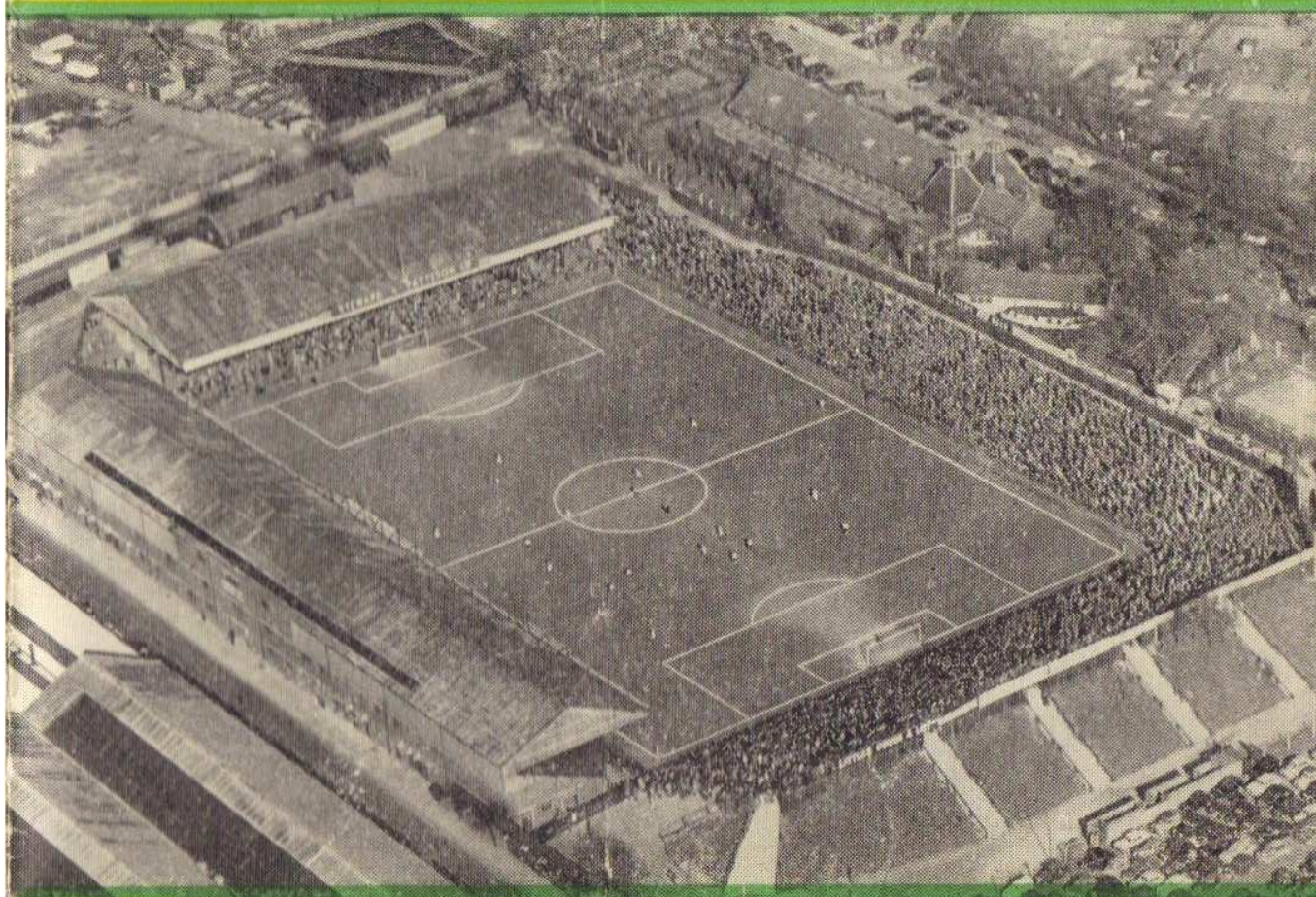




NORWICH CITY FOOTBALL CLUB



FOOTBALL LEAGUE (Third Division South)

SATURDAY, 9th NOVEMBER, 1957

Norwich City v. Swindon

PRICE **4d** EACH

Nº 92

TWO VALUABLE POINTS—worth remembering!

1—Branded Goods ensures reliability

2—Best Possible Value for money

obtainable from **CHADDS** (D. L. WEBB) (NORWICH) LTD.

Gentlemen's and Boys' Outfitters—23, BEDFORD STREET

Telephone 22668

NORWICH



Steward & Patteson

Limited

POCKTHORPE BREWERY
— NORWICH —

Celebrated

BOTTLED BEERS

*on sale in the Refreshment Bars on the
Ground (as licensed)*

•
NORFOLK NIPS & MIDGET STOUT
. . . . for the Cold Weather

REGISTERED
PLUMBERS

Member of
Association Heating
Ventilating
Domestic Employers

W. J. TAYLOR

SANITARY AND HEATING ENGINEER

28 ESSEX STREET - NORWICH

Telephone : 24207/8

BRANCHES :

49-51 Fore Street, Ipswich. Tel. : 2727

St. Peter's Plain, Yarmouth. Tel : 2598

NORWICH CITY FOOTBALL CLUB

President: THE HON. MRS. E. BARCLAY

Vice-President: A. SOUTH, J.P.

Directors:

GEOFFREY C. WATLING (*Chairman*)

G. F. B. FISH (*Vice-Chairman*)

JAMES L. HANLY

ALD. F. C. JEX, O.B.E., J.P.

H. ROBINSON, F.C.A.

Manager: A. MACAULAY

Secretary: P. W. DASH

Ground: CARROW ROAD

(*Telephone:* 21514)

Programme Notes

In the programme for the opening match I wrote "We start the new season optimistically," but I hardly thought that at the end of nearly three months' play we would be heading the table. However, Manager Archie Macaulay has worked wonders with the players at his disposal, and they in turn have responded magnificently to his leadership to produce attractive football, which has drawn an average attendance of nearly 21,000 for the opening nine matches. A special word, also for Ron Ashman, who must surely be one of the finest captains ever to lead the City.

The Board realise the necessity of obtaining players to strengthen certain positions—and what team doesn't want strengthening—but we are not going to be rushed into panic signings. However, I can assure you that this aspect of the affairs of the club is being followed up most diligently.

Next week sees our entry into the F.A. Cup programme, and we look forward to meeting Redhill, amateur members of the Athenian League, when I feel sure our lads will continue to give a good account of themselves.

Finally, in welcoming Swindon Town to Carrow Road this afternoon, I would like to say how delighted we are to find the club that joined us in the re-election stakes last season are now alongside us at the head of the table.

GEOFFREY WATLING,
Chairman.

* * * * *

The Newark Cameronians Carnival Band will be performing before the match and during the interval, and they will take a collection to help cover their travelling expenses.

Tickets for the Redhill Cup Tie are on sale at the Main Office. Prices, Block A 6/-, Blocks B and C 4/9 and Block D 4/-. Season Ticket holders have the option to retain their seats until Wednesday night 13th November. The kick-off for this match will be 3 p.m., with use of floodlights as required.

FORTHCOMING MATCHES

Saturday, 16th November—

F.A. Cup (1st Round Proper) v. REDHILL; kick-off 3 p.m.

WELCOME TO OUR VISITORS FROM SWINDON

A sincere greeting from Management and Staff of

The Gaumont Restaurant

Situated at the Haymarket in the very centre of Norwich

FULLY LICENSED — Open 11 a.m.—10 p.m.

COFFEE LUNCHEON TEA HIGH TEA DINNER SNACKS

LUNCHEON *before, and TEA after the match at the GAUMONT RESTAURANT, will complete your day*



Introducing
**Ken
Nethercott
and
Peter
Gordon**



KEN NETHERCOTT

Born Bristol, he played two games as an amateur on his return from the Army in Italy, and then signed professional in April, 1947. Ken has been a stalwart of the club in good days and bad, and has 349 first team appearances to his credit.

One of the safest and most reliable 'keepers in the country, he played for England "B" v. Scotland, F.A. XI and the Football Combination.

PETER GORDON

Born Northampton, he was signed from a local Junior Club in December, 1949.

Graduated through the "A" and Reserve teams with a break from 1950-52, when he was in the Army for National Service.

Although signed and originally played as an outside right, Peter has filled the bill well at both inside right and wing half. 151 first team appearances to his credit.

ATTENTION! — Ours is personal . . .

Consult **THE SPORTS SPECIALISTS**

Tom Stevenson (Sports) Ltd.

for all your Sports Requisites

**FOOTBALL — HOCKEY — BADMINTON — SQUASH — TABLE TENNIS
and all INDOOR GAMES**

Only address:

SWAN LANE, off LONDON STREET, NORWICH (Tel. Norwich 26413)

Saturdays without Football
would be dull!

Life without MUSIC IS dull

So for EVERYTHING in Music first try

W. E. WILLSON'S MUSIC BAZAAR LTD.

24 White Lion Street (Next the steps)

Norwich

Telephone 26414 or write

ALL makes of RECORDS — Sheet and Classical
Music — Instruments, Strings, etc. It's the
Personal Attention that counts

BEFORE AND AFTER THE
MATCH CALL AT THE

Foundry Bridge Kiosk

Prop. : MRS. E. WRIGHT

(Outside Thorpe Station)

For your Newspapers, Magazines,
Cigarettes, Tobacco, etc.

TWENTY-FOUR YEARS AGO

Never before in their history had Norwich City been so favourably placed in the third month of the season as they were in 1933. Successive victories at Exeter and over Cardiff at the Nest had put them in top position again, and on 11th November they held on to their lead with a great win at Bournemouth.

Still without injured Burditt they found themselves a goal down through White in the eleventh minute, and Tunstall added another for the home side before Scott, who had been off receiving attention, replied for the Canaries from a Warnes pass just before the interval.

In the second half City played like a promotion team. They peppered the Bournemouth goal; Vinall equalised from the penalty spot and then put his team in the lead and Scott hit a great shot to net the fourth.

This was a testing period for Norwich, for their next two matches, both at home, were against Charlton and Reading, regarded as their strongest challengers. In addition, they were faced with the first round of the Cup, in which they were drawn to meet Crystal Palace at Selhurst Park.

The Reserves completed a double for City on 11th November, beating Stamford at the Nest by four clear goals in an East Midlands League fixture. Two of the goals came from new signing Bartley, one from Alf Kirchen, the other from Morris.

Highlight of the local amateur programme was the F.A. Amateur Cup replay between Sheringham and Thetford. This time Sheringham made no mistake, winning 6—2 and qualifying to visit Yarmouth in the next round. Four of Sheringham's goals were scored by Childs, the other two by R. Craske, Knight and Tufts replying for Thetford.

In an interesting match at Wellesley Road, Norfolk beat London Counties by seven goals to three. A notable name on the Norfolk score sheet was that of A. Brown, who scored twice. Walker (Walsingham) also got two, Snow (King's Lynn), Temple (Norfolk Ironworks) and Francis (King's Lynn S.B. Factory) getting the others.

Away wins were the order of the day in the Norfolk and Suffolk League. Gorleston beat Boulton & Paul 5—0 at Carrow Road, Yarmouth scored three without

AFTER THE MATCH VISIT THE

★ ORFORD ARMS

(HOST—GEORGE C. DOE)

MUSIC EVERY EVENING

BULLARDS BEERS WINES AND SPIRITS

NORFOLK AND SUFFOLK

Hospitals Contributors' Association

Offers all the following benefits to you for a contribution of 3d. per week :

Cash grant whilst in Hospital. Maternity, Optical, Dental and Surgical Appliance grants. Free Convalescent Home treatment. Free Loan of sick room equipment.

Membership through business groups, or as individual subscriber.

**Separate scheme for grants towards the cost of Treatment in Hospital
Private Wards and Nursing Home**

Full particulars on application to Head Office, No. 38, St. Giles Street, Norwich

reply at Cromer, and Lynn netted the odd one of five against C.E.Y.M.S. at Earham Road. Only home win was that of Lowestoft, who beat Bury by the only goal at Crown Meadow.

Norwich Boys made good progress in the English Schools Shield, beating Kettering at Newmarket Road by four goals to one. Spinks got a first half hat-trick for Norwich, whose other goal came from Woodrow.

SPORTS QUIZ

1. The only league club without a drawn game has the same goals for and against as Norwich. Who?
2. Which two teams drew twice with Norwich last season?
3. Who lost at Blackpool last week for the tenth time in twelve seasons?
4. Which Australian has an average of 106 against South Africa in 10 Tests?
5. Last season Norwich scored in every home match but one; was it against Reading, Southampton or Ipswich?
6. Last season Swindon scored in every home match but two; was it against Plymouth, Southampton or Ipswich?
7. In which league did a club pay a record transfer fee of £9,000?
8. Which team won the Cup Final with Thompson and Johnson at half back?
9. Who went from Kilmarnock to Darlington to Oldham to Norwich to Newport to Leyton Orient?
10. Which England team is unbeaten since 1913?
11. How many seasons ago did Swindon beat Cardiff and Stoke to reach Round 5?
12. What distance is a mile race at Epsom?

(The answers will be found on page 13)

FISH AND CHIPS . . .

. . . the way you like them!

OUR SUCCESS COMES FROM DOING A
COMMON JOB, UNCOMMONLY WELL

MARCANTONIO

(OFF PRINCE OF WALES ROAD) NORWICH

NORWICH CITY

FOOTBALL SUPPORTERS' CLUB

(Registered under "The Small Lotteries and Gaming Act, 1956")

Our football pool competition is increasing each week, and with the City getting results to please the fans it is hoped that all supporters will show their appreciation by taking part in the pool.

More agents are coming along, but we feel sure that there are many who would like to take part but do not know how to go about it.

May we remind our members that the Industrial Club in Oak Street is no longer our Headquarters and that membership there has ceased. We are searching for new premises and hope to be successful in the near future. In the meantime please send all mail to our office No. 2 Rose Lane, Norwich.

We still require assistance with the 2d. on the Ball competition. If you have some spare time, please come along and help.

JOIN THE SUPPORTERS' CLUB NOW!



**Apply at our office at the CORNER OF ROSE LANE AND
KING STREET or at the CLUB HUT AT CARROW ROAD
on Match Days**

POINTER

- ★ CIVIL ENGINEERING CONTRACTORS
- ★ PLANT HIRE SPECIALISTS
- ★ EXTENSIVE MODERN TRANSPORT FLEET

HEAD OFFICE—5, GUARDIAN ROAD, NORWICH

RAIL EXCURSIONS

SUNDAY, 24th NOVEMBER

Ipswich	-	7/-
Colchester	-	8/9
Chelmsford	-	11/9
Shenfield	-	13/-
Romford	-	14/-
Ilford	-	14/9
London	-	15/9

(BUFFET CAR)

NORWICH (THORPE) depart 9.30 a.m.
 RETURN, London 6.50 p.m., Ilford 6.59 p.m.,
 Romford 7.10 p.m., Shenfield 7.15 p.m.,
 Chelmsford 7.40 p.m. Colchester 8.10 p.m.,
 Ipswich 8.40 p.m.

Full details from Stations, Offices and
 Travel Agencies

BRITISH RAILWAYS

Norwich Surgical Stores

JOCK STRAPS
 SURGICAL GOODS
 AND APPLIANCES

55 PRINCE OF WALES ROAD
 Telephone : 2 0 6 1 3

36 MAGDALEN STREET
 Telephone : 2 6 0 8 0

Norwich City [Yellow Shirts, Green Collars]

- [1] Oxford
- [2] McCrohan
- [4] Wilson R. [5] Bu
- [7] Gordon [8] Brennan [9] Ga

Referee

Mr. H. J. Husband
 London



- [11] Darcy [10] Edwards [9] Mick
- [6] McDonald [5] H
- [3] Lee
- [1] Bu

Swindon [Red Shirts, White Knickers]

ROOTES MA

- ★ HUMBER COMMER
- HILLMAN KARRIER
- SUNBEAM

NORWICH MO
 PRINCE OF WALES ROAD, NORWICH

POINTER

- ★ WASHED AND PROCESSED AGGREGATES
- ★ CONCRETE AND BREEZE WALL BLOCKS
- ★ PRECAST CONCRETE KERBS AND CHANNELS

NORWICH **Telephones Norwich 24104-5-6-7-8**

Collar and Cuffs, Black Knickers]

Oxford

[3] Ashman

] Butler

[6] Crowe

] Gavin

[10] Hunt

[11] Coxon

PPLES

ATTRACTION
NORWICH
AGEMENT
RINGS

Linesmen

Mr. C. N. English
Red Flag

Mr. E. Harvey
Yellow Flag

Micklewright

[8] Richards

[7] Skull

] Hudson

[4] Clayton

[2] Neal

] Burton

Kick-off 2.30 p.m.

**AFTER THE MATCH TAKE HER
DANCING AT**

THE SAMSON

SPECIAL SATURDAY DANCES

Catering for Functions of all kinds in
Private Rooms at competitive prices

Samson and Hercules

Tombland, Norwich - 21541-2

R. G. Pilch Ltd.

SPORTS SPECIALISTS

EQUIPMENT, CLOTHING and
FOOTWEAR for EVERY
SPORT

★ LISTS FREE

1 BRIGG STREET, NORWICH

Tel.: 28224

MAIN DEALERS

- ★ 24 HOUR SERVICE
for
PETROL, BREAKDOWNS
and
GARAGING FACILITIES

MOTOR Co. LTD.

NORWICH

Telephone 28811

LTD., 30-34 BOTOLPH ST., NORWICH

Norwich for promotion?

RON ASHMAN

gives you the Low-Down
on the new Norwich
in Sunday's

EMPIRE NEWS

"WHAT'S ON"

CARLTON

Sunday, 10th November. "SERPENT OF THE NILE" (U) — Rhonda Flemming, William Lundigan. Colour by Technicolor.

Monday, 11th November. "THE SCAMP" (A)—Richard Attenborough, Terence Morgan, Colin "Smiley" Petersen, Dorothy Alison, Jill Adams. "OUR GIRL FRIDAY" (U)—Kenneth More, George Cole, Joan Collins, Robertson Hare. Eastman Colour.

GAUMONT

Sunday, 10th November. "MAN IN THE ATTIC" (A) — Jack Palance, Constance Smith.

"ROADHOUSE GIRL" (A)—Sandra Dorne, Maxwell Reed.

Monday, 11th November. "MAN OF A THOUSAND FACES" (A)—James Cagney, Dorothy Malone, Jane Greer. CinemaScope.

"THE NIGHT RUNNER" (A)—Ray Danton, Colleen Miller.

ODEON

Sunday, 10th November. "CARIBBEAN GOLD" (U)—John Payne, Arlene Dahl. Technicolor.

"WORM'S EYE VIEW" (U)—Ronald Shiner, Diana Dors.

Monday, 11th November. "THE SCAMP" (A)—Richard Attenborough, Terence Morgan, Colin "Smiley" Petersen, Dorothy Alison, Jill Adams.

"OUR GIRL FRIDAY" (U)—Kenneth More, George Cole, Joan Collins, Robertson Hare. Eastman Colour.

REGENT

Sunday, 10th November. "RING OF FEAR" (A)—Clyde Beatty, Mickey Spillane, Pat O'Brien. CinemaScope, WarnerColor.

"LUCKY LOSERS" (A)—The Bowery Boys.

Monday, 11th November. "THE NIGHT OF THE DEMON" (X)—Dana Andrews, Peggy Cummings, Niall MacGinnis.

"TWENTY MILLION MILES TO EARTH" (X)—William Hopper, Joan Taylor.

THEATRE ROYAL

Monday, 11th November. "BACK FROM THE DEAD" (X) — Peggy Castle, Arthur Franz.

"UNKNOWN TERROR" (A).

St. GEORGE & DRAGON

Proprietor: FRED SELF

HAYMARKET — NORWICH

TEL.: NORWICH 27714

MUSIC EVERY EVENING

COMMERCIAL ACCOMMODATION

MORGANS ALES & STOUT

W. J. BRACEY

HOLLIES FARM

STRUMPSHAW, NORWICH

Pedigree Chicks at Commercial
Prices, send for Free List, or
'phone Brundall 2310

THIRD DIVISION (South)

Aug.	24	Crystal Palace	h.	3—2
	28	Southend United	a.	2—5
	31	Torquay United	a.	1—1
Sept.	4	Southend United	h.	0—2
	7	Brentford	h.	3—2
	9	Shrewsbury Town	a.	0—0
	14	Colchester United	a.	2—1
	18	Shrewsbury Town	h.	2—0
	21	Brighton & Hove A.	a.	1—0
	28	Bournemouth	h.	2—2
Oct.	2	Reading	a.	2—1
	5	Walsall	a.	1—2
	9	Northampton Town	h.	2—2
	12	Queen's Park Rangers	h.	2—0
	19	Exeter City	a.	2—2
	23	Reading	h.	2—2
	26	Gillingham	h.	2—0
Nov.	2	Millwall	a.	2—2
	9	Swindon Town	h.	
	16	Redhill (F.A. Cup)	h.	
	23	Plymouth Argyle	h.	
	30	Port Vale	a.	
Dec.	7	(2) Newport County	h.	
	14	Southampton	a.	
	21	Crystal Palace	a.	
	25			
	26	Northampton Town	a.	
	28	Torquay United	h.	
Jan.	4	(3) Coventry City	h.	
	11	Brentford	a.	
	18	Colchester United	h.	
	25	(4) Aldershot	a.	
Feb.	1	Brighton & Hove A	h.	
	8	Bournemouth	a.	
	15	(5) Walsall	h.	
	22	Queen's Park Rangers	a.	
Mar.	1	(6) Exeter City	h.	
	8	Gillingham	a.	
	15	Millwall	h.	
	22	Plymouth Argyle	a.	
	29	Southampton	h.	
Apr.	4	Watford	a.	
	5	Swindon Town	a.	
	7	Watford	h.	
	12	Port Vale	h.	
	19	Newport County	a.	
	21	Coventry City	a.	
	26	Aldershot	h.	
May	3			

FOOTBALL COMBINATION

Aug.	24	Charlton Athletic	a.	2—7
	28	Chelsea	h.	0—2
	31	Crystal Palace	h.	2—2
Sept.	4	Chelsea	a.	1—4
	7	Leyton Orient	a.	1—0
	14	Brentford	h.	2—0
	19	Brighton & Hove A.	a.	2—1
	21	Tottenham Hotspur	h.	1—5
	28	Portsmouth	a.	1—7
Oct.	2	Bournemouth	h.	7—1
	5	Bristol City	h.	4—1
	12	Luton Town	a.	0—5
	19	Leicester City	h.	1—4
	26	Bristol Rovers	a.	1—7
Nov.	2	Plymouth Argyle	h.	1—2
	9	West Ham United	a.	
	23	Ipswich Town	a.	
	30	Southampton	h.	
Dec	7	Southend United	a.	
	14	Swansea Town	h.	
	21	Charlton Athletic	h.	
	25			
	26			
	28	Crystal Palace	a.	
Jan.	4	Northampton Town	a.	
	11	Leyton Orient	h.	
	18	Brentford	a.	
	25	Aldershot	h.	
Feb.	1	Tottenham Hotspur	a.	
	8	Portsmouth	h.	
	15	Coventry City	a.	
	22	Luton Town	h.	
Mar.	1	Leicester City	a.	
	8	Bristol Rovers	h.	
	15	Plymouth Argyle	a.	
	22	West Ham United	h.	
	29	Queen's Park Rangers	a.	
Apr.	4	Coventry City	h.	
	5	Ipswich Town	h.	
	7	Aldershot	a.	
	12	Southampton	a.	
	19	Southend United	h.	
	26	Swansea Town	a.	

You can depend on TELEVISION CENTRE for

Television — V.H.F. Radio and Radiograms — Hi-Fi Equipment — Tape
Recorders — STENOLETE Dictating Machines — Car Radio — Records
and Record Players — Refrigerators — Shavers — Electrical Equipment

TELEVISION AND RECORD CENTRE

(TUMILTY ELECTRIC LTD.)

20 WENSUM STREET

62 ST. GILES STREET

NORWICH

Phone: 22117 (Private branch ex.)

EASTERN FOOTBALL NEWS

THE PINK UN

- LEAGUE AND LOCAL RESULTS AND TABLES
- FULL REPORTS
- COMMENT AND CLUB VIEWPOINT

PRICE 2d.

Order your copy from any newsagent, or by post (13/4 for the 1957/58 season) from Subscription Department, "Eastern Football News," 57 London Street, Norwich.

FOOTBALL LEAGUE (THIRD DIVISION SOUTH)

	P.	W.	D.	L.	Goals		Pts.
					F.	A.	
NORWICH CITY	18	8	7	3	31	26	23
Swindon	18	9	4	5	34	20	22
Port Vale	16	9	3	4	28	12	21
Reading	17	8	5	4	31	17	21
Brighton	17	10	1	6	31	27	21
Brentford	17	9	3	5	33	23	21
Plymouth	18	10	1	7	23	22	21
Colchester	19	7	5	7	27	35	19
Southampton	18	7	4	7	38	28	18
Newport	16	6	6	4	21	22	18
Queen's Park Rangers	17	8	2	7	20	27	18
Bournemouth	16	7	3	6	25	29	17
Southend	17	8	1	8	41	24	17
Crystal Palace	17	6	4	7	25	26	16
Shrewsbury	17	5	6	6	17	25	16
Millwall	17	7	2	8	28	26	16
Watford	18	4	7	7	20	22	15
Aldershot	17	6	3	8	22	27	15
Coventry	15	5	4	6	13	23	14
Northampton	18	5	3	10	27	34	13
Exeter	17	4	5	8	20	31	13
Walsall	15	4	3	8	19	27	11
Gillingham	16	5	1	10	16	26	11
Torquay	17	4	3	10	15	26	11

For QUALITY in your Shopping Basket
and DIVIDENDS in Your Purse

SHOP AT

30 GROCERY
BRANCHES



FOR EVERYTHING

24 BUTCHERY
BRANCHES

F-or I-mmediate T-ip T-op S-ervice

'PHONE OR WRITE

FITT BROS. LTD.

67/71 Ber Street, Norwich

(Established 1868)

Furniture Removers

Taxi Service

Funeral Car proprietors

Wedding Car proprietors

Telephone : Norwich 20127

Appearances and Goal Scorers

	League and Cup		Combination			League and Cup		Combination	
	Apps.	Goals	Apps.	Goals		Apps.	Goals	Apps.	Goals
Applegate, P....	—	—	—	—	Jermy, P. ...	—	—	12	—
Ashman, R. G.	18	2	—	—	Laskey, R. G.	—	—	13	4
Bacon, R. A.	3	—	12	2	Lockwood, R.	1	—	11	—
Barber, ...	—	—	2	1	Logan, S. ...	—	—	2	—
Bly, T. G. ...	—	—	11	2	March, J. E. ...	—	—	14	—
Brennan, R. A.	17	2	—	—	McCrohan, R.	15	—	1	—
Butler, B. ...	15	—	—	—	Milne, M. ...	3	—	11	3
Chilleystone, A.	—	—	11	1	Nethercott, K.	—	—	15	—
Clingo, G. N.	—	—	—	—	Nobbs, A. ...	—	—	—	—
Cole, M. E. ...	—	—	1	—	Oxford, K. ...	18	—	—	—
Coxon, W. G.	13	3	3	1	Rayner, R. ...	—	—	5	—
Crowe, M. ...	7	1	3	3	Savino, R. ...	—	—	8	2
Dixon, T. ...	—	—	2	—	Smith, ...	—	—	3	—
Eastall, J. ...	—	—	1	—	Spelman, R. ...	—	—	3	—
Gavin, J. T. ...	17	10	—	—	Stewart, E. ...	13	—	2	—
Gordon, P. J.	18	4	—	—	Thurlow, B. ...	—	—	2	—
Greatrex, J. ...	—	—	—	—	Wilson, J. C.	7	—	8	—
Heffer, R. W.	—	—	8	4	Wilson, R. ...	17	—	—	—
Hunt, R. A. ...	16	9	1	1	Own Goal ...	—	—	—	2

SPORTS QUIZ ANSWERS

1. Carlisle
2. Aldershot and Brentford
3. Chelsea
4. Harvey
5. Southampton
6. Plymouth and Southampton
7. Rugby League
8. Sunderland, 1937
9. T. Johnston
10. Women's lacrosse
11. Six (1951-2)
12. 1 mile 110 yards

Stanley Matthews, most brilliant footballer of the age, has helped the Co-op to design the ideal Football Boots.

Obtainable only at **FOOTWEAR DEPARTMENT**

**IDEAL
BIRTHDAY
PRESENTS**



**CERTAIN
TO SCORE
WITH HIM**



START RIGHT ON C.T.S.

"C.T.S." Batteries, Ready Charged, Guaranteed, 6 volt, from £3 15s., 12 volt, £5 5s., Exchange. Just ring, we deliver and fit immediately.

FOR THE CYCLIST we offer TYRES at 10/11d., Tubes 4/6d., 26 x 1 $\frac{1}{8}$, 26 x 1 $\frac{1}{4}$, 26 x 1 $\frac{1}{2}$, 28 x 1 $\frac{1}{2}$.

**C.T.S., 66 ST. GILES STREET
and 15 MAGDALEN ROAD - NORWICH**

Telephones : 22429 and 27537

NORFOLK'S ONLY R.A.C. APPOINTED BATTERY SERVICE

HALF-TIME SCOREBOARD

A	WEST HAM RES. NORWICH CITY RES.	N	BURNLEY LEICESTER CITY
B	BOURNEMOUTH MILLWALL	O	MANCHESTER CITY BOLTON WANDERERS
C	BRENTFORD PLYMOUTH ARGYLE	P	NEWCASTLE UTD. BLACKPOOL
D	COLCHESTER UTD. ALDERSHOT	Q	NOTTS FOREST ARSENAL
E	COVENTRY CITY EXETER CITY	R	PORTSMOUTH WOLVERHAMPTON
F	CRYSTAL PALACE NEWPORT COUNTY	S	PRESTON NORTH END MANCHESTER UTD.
G	NORTHAMPTON BRIGHTON and HOVE	T	TOTTENHAM EVERTON
H	READING SOUTHEND UTD.	U	WEST BROMWICH ASTON VILLA
I	SHREWSBURY QUEEN'S PARK R.	V	BRISTOL CITY BLACKBURN ROVERS
J	TORQUAY UTD. PORT VALE	W	CARDIFF CITY IPSWICH TOWN
K	WALSALL GILLINGHAM	X	LEYTON ORIENT BRISTOL ROVERS
L	WATFORD SOUTHAMPTON	Y	LIVERPOOL NOTTS COUNTY
M	BIRMINGHAM CITY SUNDERLAND	Z	STOKE CITY SHEFFIELD UTD.

football fans read

NEWS OF THE WORLD

expert reports



Norwich City F.C. chooses



Floodlights

Floodlit Football has come to stay—the sporting world has acclaimed this innovation, and Norwich City Football Club, like many other leading clubs have wisely chosen REVO Floodlights to illuminate their ground.

The Revo Staff of Lighting Engineers is available for assistance in the preparation of floodlighting schemes or for submitting detailed proposals without obligation.



Typical examples from the wide range of REVO Floodlights.

REVO ELECTRIC CO., LIMITED, TIPTON, STAFFS.

Manufacturers of—Public and Industrial Lighting, Switch and Fusegear, Cookers and Domestic Appliances, Fans, etc.

THE EAST ANGLIAN TRUSTEE SAVINGS BANK

ESTABLISHED 1816

ORDINARY DEPARTMENT

Deposits 1/- to £500 per annum. Total limit £3000.

Withdrawals on Demand.

Interest 2½%.

Up to **£15 FREE OF INCOME TAX.**

Husband and wife may each claim £15.

SPECIAL INVESTMENT DEPARTMENT

Deposits up to **£2000** which may be deposited in one sum.

Withdrawals usually on Demand.

The right is reserved to ask for one month's notice.

Interest 3½%.

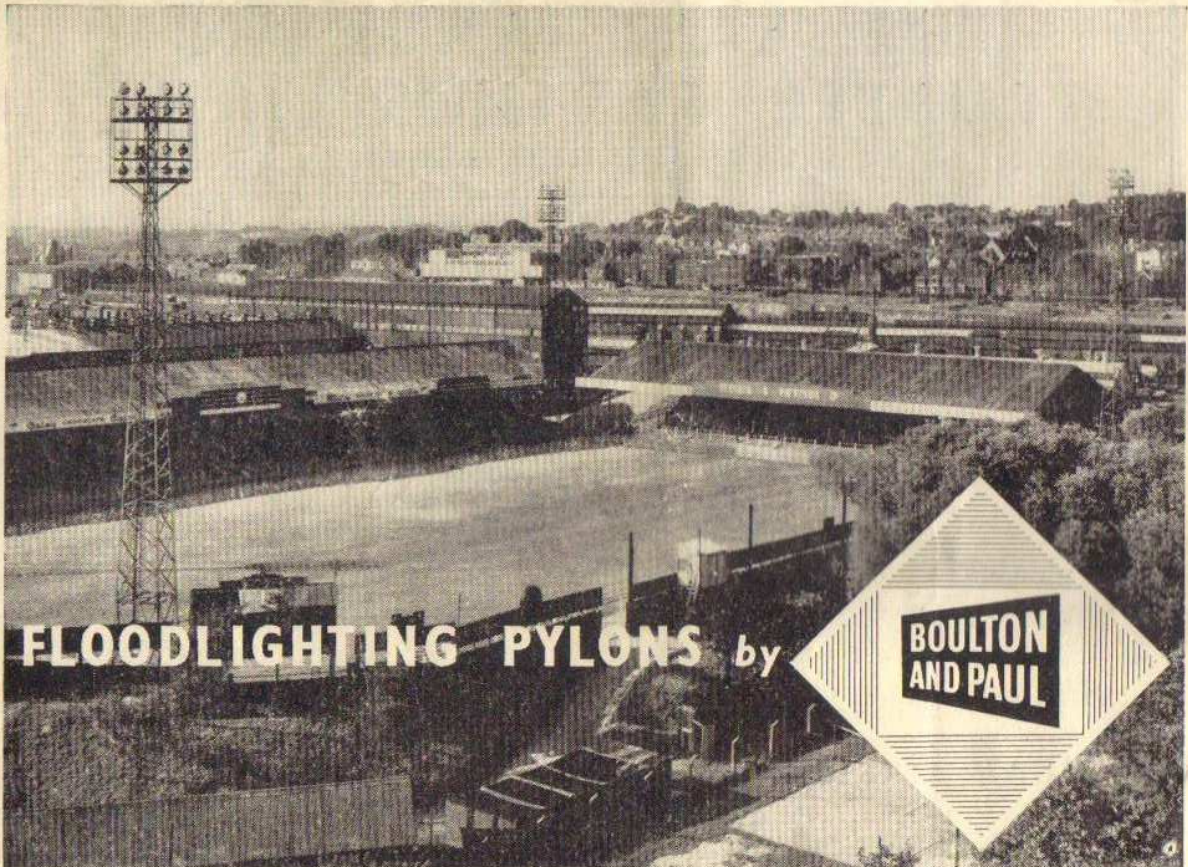
HEAD OFFICE — SURREY STREET, NORWICH

Branches throughout East Anglia

CARTER
BUILDER

R. G. CARTER LIMITED, DRAYTON, NORWICH
Tel. Drayton 355 (5 lines)

ooks



FLOODLIGHTING PYLONS by

